

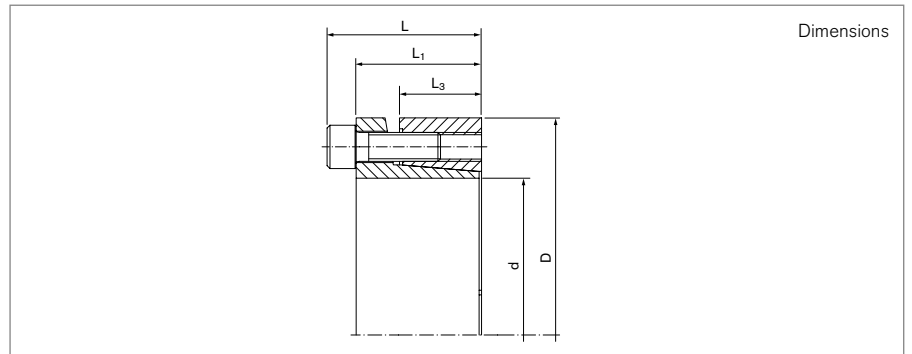
# Locking Assemblies

## RINGFEDER® RfN 7003

Two piece design with slit and single taper and without flange



|                |                            |                           |
|----------------|----------------------------|---------------------------|
| self-centering | without axial displacement | with low surface pressure |
|----------------|----------------------------|---------------------------|



| Locking Assembly dimensions |         |   |       |       |                |                | Transmissible torques or axial forces |                 | Surface pressure |           | Locking screws  |                |                |
|-----------------------------|---------|---|-------|-------|----------------|----------------|---------------------------------------|-----------------|------------------|-----------|-----------------|----------------|----------------|
| d                           | d       | x | D     | L     | L <sub>1</sub> | L <sub>3</sub> | T                                     | F <sub>ax</sub> | Shaft<br>PW      | Hub<br>PN | n <sub>sc</sub> | D <sub>G</sub> | T <sub>A</sub> |
| mm                          | inch    |   |       | inch  |                |                | ft-lbs                                | lbs             | psi              |           |                 |                | ft-lbs         |
| 0.750                       | 3/4     | x | 1.850 | 1.339 | 1.102          | 0.669          | 260                                   | 7000            | 40600            | 17400     | 5               | M6             | 10             |
| 0.875                       | 7/8     | x | 1.850 | 1.339 | 1.102          | 0.669          | 295                                   | 7400            | 38800            | 17800     | 5               | M6             | 10             |
| 1.000                       | 1       | x | 1.969 | 1.339 | 1.102          | 0.669          | 415                                   | 8100            | 40600            | 20000     | 6               | M6             | 10             |
| 1.125                       | 1 1/8   | x | 2.165 | 1.339 | 1.102          | 0.669          | 460                                   | 8100            | 36200            | 18600     | 6               | M6             | 10             |
| 1.188                       | 1 3/16  | x | 2.165 | 1.339 | 1.102          | 0.669          | 480                                   | 8100            | 34100            | 18600     | 6               | M6             | 10             |
| 1.250                       | 1 1/4   | x | 2.362 | 1.339 | 1.102          | 0.669          | 700                                   | 11200           | 42000            | 21700     | 8               | M6             | 10             |
| 1.375                       | 1 3/8   | x | 2.362 | 1.339 | 1.102          | 0.669          | 775                                   | 11200           | 38800            | 21700     | 8               | M6             | 10             |
| 1.438                       | 1 7/16  | x | 2.559 | 1.339 | 1.102          | 0.669          | 805                                   | 11200           | 38000            | 21200     | 8               | M6             | 10             |
| 1.500                       | 1 1/2   | x | 2.559 | 1.339 | 1.102          | 0.669          | 840                                   | 11200           | 36500            | 21200     | 8               | M6             | 10             |
| 1.625                       | 1 5/8   | x | 2.953 | 1.614 | 1.299          | 0.787          | 1500                                  | 15700           | 44200            | 24300     | 7               | M8             | 26             |
| 1.750                       | 1 3/4   | x | 2.953 | 1.614 | 1.299          | 0.787          | 1610                                  | 15700           | 41300            | 24300     | 7               | M8             | 26             |
| 1.875                       | 1 7/8   | x | 2.953 | 1.614 | 1.299          | 0.787          | 1700                                  | 19100           | 39300            | 22900     | 7               | M8             | 26             |
| 1.938                       | 1 15/16 | x | 3.150 | 1.614 | 1.299          | 0.787          | 1790                                  | 19100           | 37400            | 22900     | 7               | M8             | 26             |
| 2.000                       | 2       | x | 3.150 | 1.614 | 1.299          | 0.787          | 1790                                  | 19100           | 36800            | 22900     | 7               | M8             | 26             |
| 2.125                       | 2 1/8   | x | 3.346 | 1.614 | 1.299          | 0.787          | 2180                                  | 22500           | 39600            | 25100     | 8               | M8             | 26             |
| 2.188                       | 2 3/16  | x | 3.346 | 1.614 | 1.299          | 0.787          | 2250                                  | 22500           | 38800            | 25100     | 8               | M8             | 26             |
| 2.250                       | 2 1/4   | x | 3.543 | 1.614 | 1.299          | 0.787          | 2320                                  | 22500           | 37000            | 23600     | 8               | M8             | 26             |
| 2.375                       | 2 3/8   | x | 3.543 | 1.614 | 1.299          | 0.787          | 2470                                  | 22500           | 35200            | 23600     | 8               | M8             | 26             |
| 2.438                       | 2 7/16  | x | 3.740 | 1.614 | 1.299          | 0.787          | 2840                                  | 24700           | 38500            | 25100     | 9               | M8             | 26             |
| 2.500                       | 2 1/2   | x | 3.740 | 1.614 | 1.299          | 0.787          | 2910                                  | 24700           | 37500            | 25100     | 9               | M8             | 26             |
| 2.563                       | 2 9/16  | x | 3.740 | 1.614 | 1.299          | 0.787          | 3010                                  | 24700           | 36700            | 25100     | 9               | M8             | 26             |
| 2.688                       | 2 11/16 | x | 4.331 | 1.969 | 1.575          | 0.945          | 4500                                  | 36000           | 41300            | 26500     | 8               | M10            | 52             |
| 2.750                       | 2 3/4   | x | 4.331 | 1.969 | 1.575          | 0.945          | 4630                                  | 36000           | 40300            | 25800     | 8               | M10            | 52             |
| 2.875                       | 2 7/8   | x | 4.528 | 1.969 | 1.575          | 0.945          | 4790                                  | 36000           | 38400            | 24300     | 8               | M10            | 52             |
| 2.938                       | 2 15/16 | x | 4.528 | 1.969 | 1.575          | 0.945          | 4930                                  | 36000           | 37400            | 24300     | 8               | M10            | 52             |
| 3.000                       | 3       | x | 4.724 | 1.969 | 1.575          | 0.945          | 5260                                  | 36000           | 36000            | 24300     | 8               | M10            | 52             |

To continue see next page

### Locking Assemblies RINGFEDER® RfN 7003

| Locking Assembly dimensions |         |   |       |       |                |                | Transmissible torques or axial forces |                 | Surface pressure        |                       | Locking screws  |                |                |
|-----------------------------|---------|---|-------|-------|----------------|----------------|---------------------------------------|-----------------|-------------------------|-----------------------|-----------------|----------------|----------------|
| d                           | d       | x | D     | L     | L <sub>1</sub> | L <sub>3</sub> | T                                     | F <sub>ax</sub> | Shaft<br>p <sub>w</sub> | Hub<br>p <sub>n</sub> | n <sub>sc</sub> | D <sub>G</sub> | T <sub>A</sub> |
| mm                          | inch    |   |       | inch  |                |                | ft-lbs                                | lbs             | psi                     |                       |                 |                | ft-lbs         |
| 3.250                       | 3 1/4   | x | 4.921 | 1.969 | 1.575          | 0.945          | 6230                                  | 40500           | 38500                   | 25800                 | 9               | M10            | 52             |
| 3.375                       | 3 3/8   | x | 4.921 | 1.969 | 1.575          | 0.945          | 6450                                  | 40500           | 37400                   | 25800                 | 9               | M10            | 52             |
| 3.438                       | 3 7/16  | x | 5.118 | 1.969 | 1.575          | 0.945          | 6480                                  | 40500           | 37000                   | 24300                 | 9               | M10            | 52             |
| 3.500                       | 3 1/2   | x | 5.118 | 1.969 | 1.575          | 0.945          | 6700                                  | 40500           | 36000                   | 24300                 | 9               | M10            | 52             |
| 3.750                       | 3 3/4   | x | 5.315 | 1.969 | 1.575          | 0.945          | 7800                                  | 45000           | 37400                   | 25800                 | 10              | M10            | 52             |
| 3.938                       | 3 15/16 | x | 5.709 | 2.205 | 1.732          | 1.024          | 9870                                  | 54000           | 38800                   | 27200                 | 8               | M12            | 92             |
| 4.000                       | 4       | x | 5.709 | 2.205 | 1.732          | 1.024          | 9960                                  | 54000           | 38200                   | 27200                 | 8               | M12            | 92             |
| 4.438                       | 4 7/16  | x | 6.102 | 2.205 | 1.732          | 1.024          | 10800                                 | 54000           | 34500                   | 25800                 | 8               | M12            | 92             |
| 4.750                       | 4 3/4   | x | 6.496 | 2.205 | 1.732          | 1.024          | 13200                                 | 56200           | 36000                   | 25800                 | 9               | M12            | 92             |
| 4.938                       | 4 15/16 | x | 7.087 | 2.520 | 2.047          | 1.339          | 18400                                 | 78700           | 35800                   | 24300                 | 12              | M12            | 92             |
| 5.000                       | 5       | x | 7.087 | 2.520 | 2.047          | 1.339          | 19100                                 | 78700           | 34500                   | 24300                 | 12              | M12            | 92             |
| 5.438                       | 5 7/16  | x | 7.480 | 2.677 | 2.126          | 1.339          | 19900                                 | 78700           | 30100                   | 21400                 | 9               | M14            | 140            |
| 5.938                       | 5 15/16 | x | 7.874 | 2.677 | 2.126          | 1.339          | 24300                                 | 90000           | 33000                   | 24300                 | 10              | M14            | 140            |
| 6.438                       | 6 7/16  | x | 8.858 | 3.071 | 2.520          | 1.732          | 33200                                 | 112000          | 26100                   | 18800                 | 12              | M14            | 140            |
| 6.938                       | 6 15/16 | x | 9.252 | 3.071 | 2.520          | 1.732          | 34600                                 | 112000          | 24600                   | 18800                 | 12              | M14            | 140            |

More sizes on request

### Explanation

|                                                        |                                                                          |                                                                        |
|--------------------------------------------------------|--------------------------------------------------------------------------|------------------------------------------------------------------------|
| <b>d</b> = Inner diameter (decimal notation)           | <b>L<sub>3</sub></b> = Width of ring                                     | <b>p<sub>n</sub></b> = Surface pressure on hub at given T <sub>A</sub> |
| <b>d</b> = Inner diameter                              | <b>T</b> = Transmissible torque at given T <sub>A</sub>                  | <b>n<sub>sc</sub></b> = Quantity of screws                             |
| <b>D</b> = Outer diameter                              | <b>F<sub>ax</sub></b> = Transmissible axial force                        | <b>D<sub>G</sub></b> = Thread                                          |
| <b>L</b> = Overall length                              | <b>p<sub>w</sub></b> = Surface pressure on shaft at given T <sub>A</sub> | <b>T<sub>A</sub></b> = Tightening torque of the clamping screws        |
| <b>L<sub>1</sub></b> = Overall length (without screws) |                                                                          |                                                                        |

### Ordering example

| Locking assembly | d     | D     |
|------------------|-------|-------|
| RfN 7003         | 0.875 | 1.850 |

#### Technical Information

- Surface finishes: Shaft and hub bores R<sub>a</sub> ≤ 1,6 μm
- Tolerances: Shaft: h8 · Hub: H8

Further information on  
**RINGFEDER® RfN 7003**  
 on [www.ringfeder.com](http://www.ringfeder.com)

#### Disclaimer of liability

All technical details and notes are non-binding and cannot be used as a basis for legal claims. The user is obligated to determine whether the represented products meet his requirements. We reserve the right carry out modifications at any time in the interests of technical progress.