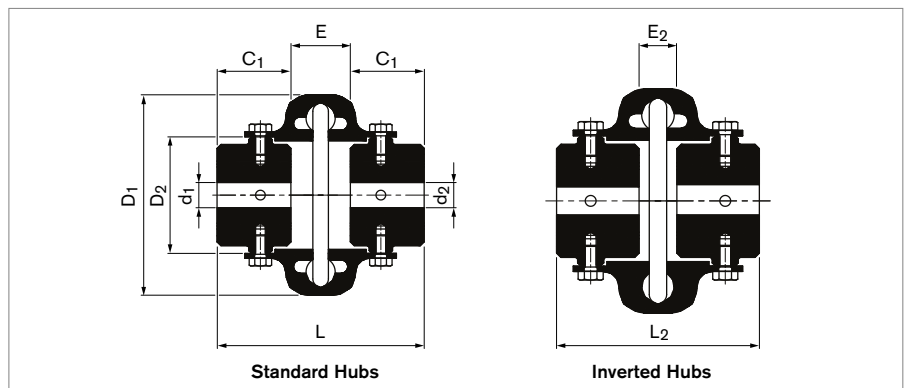
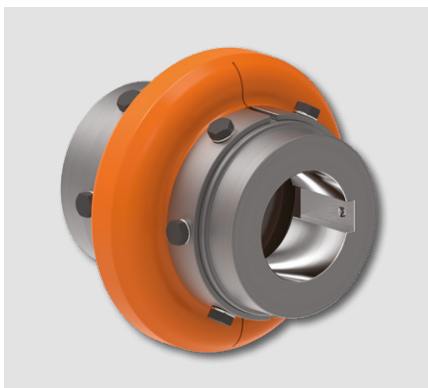


Tyre Couplings

RINGFEDER® RLU

Standard Series with Straight Bores and Keyways, without Spacer (BWB/RWR) or with Spacer (BSB/RSR)

RLU BWB/RWR: Type without Spacer, with Straight Bores and Keyways, available either with Standard Hubs (BWB) or Inverted Hubs (RWR)



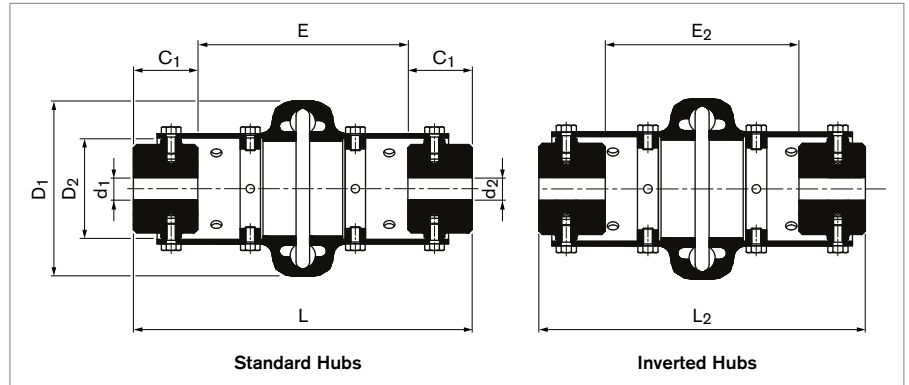
Size	T _{KN}	n _{max}	Pilot Bore Size	Max. Bore Diameter d ₁ /d ₂	D ₁	D ₂	C ₁	E	E ₁ ⁽¹⁾	E ₂	L	L ₁ ⁽¹⁾	L ₂	Gw
RLU	lb-in	1/min	in	in	in	in	in	in	in	in	in	in	in	lb
2M	194	7500	0.52	1.13	3.55	1.85	0.94	1.81	1.62	1.43	3.71	3.5	3.31	2.6
3M	380	7500	0.52	1.41	4.1	2.32	1.5	1.81	1.06	0.31	4.81	4.06	3.31	5.3
4M	557	7500	0.52	1.65	4.65	2.6	1.5	1.81	1.06	0.31	4.81	4.06	3.31	6.6
5M	973	7500	0.52	1.88	5.45	3.15	1.73	2.33	1.32	0.31	5.79	4.78	3.78	11.9
10M	1601	7500	0.52	2.16	6.45	3.66	1.73	2.33	1.32	0.31	5.79	4.78	3.78	18.1
20M	2301	6600	0.83	2.38	7.3	4.49	1.97	2.56	1.53	0.51	6.5	5.47	4.45	28.7
30M	3664	5800	0.83	3.07	8.35	5.43	2.28	2.73	1.6	0.48	7.29	6.16	5.04	46.3
40M	5558	5000	1.03	3.74	9.65	6.61	2.48	2.96	1.65	0.31	7.92	6.61	5.28	77.2
50M	7744	4200	1.03	4.13	11.15	8.15	2.76	3.58	2	0.43	9.1	7.52	5.94	119
60M	12674	3800	1.23	4.52	12.6	8.74	3.23	3.82	2.06	0.31	12.28	8.52	6.78	158.7
70M	22401	3600	1.23	4.84	14.1	9.25	3.35	4.29	2.49	0.71	10.99	9.19	7.41	189.6
80M	39500	2000	1.23	6.1	16	11.26	4.49	5.87	3.26	0.67	14.85	12.24	9.95	374.8
100M	85050	1900	1.89	6.75	21	14.13	5.51	3.75	2.74	1.74	14.77	13.76	12.76	537.9

⁽¹⁾ These values apply in the case of a single inverted hub.

To continue see next page

Tyre Couplings RINGFEDER® RLU

RLU BSB/RSR: Type with Spacer, with Straight Bores and Keyways, available either with Standard Hubs (BSB) or Inverted Hubs (RSR)



Size	T _{KN}	n _{max}	Pilot Bore Size	Max. Bore Diameter d ₁ /d ₂	D ₁	D ₂	C ₁	E	E ₁ ⁽¹⁾	E ₂	L	L ₁ ⁽¹⁾	L ₂	Gw
RLU	lb-in	1/min	in	in	in	in	in	in	in	in	in	in	in	lb
2M	194	7500	0.52	1.13	3.55	1.85	0.94	3.94	3.75	3.56	5.83	5.63	5.44	2.2
3M	380	7500	0.52	1.41	4.1	2.32	1.5	3.94, 5.51	3.3, 4.88	2.67, 4.25	6.93, 8.51	6.3, 7.88	5.67, 7.25	2.9
4M	557	7500	0.52	1.65	4.65	2.6	1.5	3.94, 5.51	3.19, 4.76	2.44, 4.01	6.93, 8.51	6.19, 7.76	5.44, 7.01	4.4
5M	973	7500	0.52	1.88	5.45	3.15	1.73	3.94, 5.51	2.94, 5.51	1.94, 3.52	7.41, 8.98	6.4, 7.98	5.4, 6.67	7.7
10M	1601	7500	0.52	2.16	6.45	3.66	1.73	3.94, 5.51	2.94, 5.51	1.94, 3.52	7.41, 8.98	6.4, 7.97	5.4, 6.67	10.6
20M	2301	6600	0.83	2.38	7.3	4.49	1.97	5.51, 7.09	4.53, 6.14	3.55, 5.12	9.45, 11.03	8.47, 10.08	7.49, 9.06	14.6
30M	3664	5800	0.83	3.07	8.35	5.43	2.28	5.51, 7.09	4.4, 5.98	3.28, 4.85	10.08, 11.66	8.96, 10.54	7.84, 9.41	25.8
40M	5558	5000	1.03	3.74	9.65	6.61	2.48	5.51, 7.09	4.22, 5.79	2.92, 4.49	10.48, 12.05	9.18, 10.75	7.88, 9.45	42.1
50M	7744	4200	1.03	4.13	11.15	8.15	2.76	5.51, 7.09	3.97, 5.55	2.44, 4.01	11.03, 12.6	9.49, 11.07	7.96, 9.53	62.2
60M	12674	3800	1.23	4.52	12.6	8.74	3.23	7.09, 9.84	5.34, 8.09	3.58, 6.34	13.55, 16.3	11.8, 14.55	10.04, 12.8	80
70M	22401	3600	1.23	4.84	14.1	9.25	3.35	7.09, 9.84	5.29, 8.05	3.5, 6.26	13.78, 16.54	11.99, 14.75	10.2, 12.96	91.7
80M	39500	2000	1.23	6.1	16	11.26	4.49	7.09, 9.84	4.55, 7.3	2.01, 4.77	16.07, 18.82	13.53, 16.28	10.99, 13.75	196.2

⁽¹⁾ These values apply in the case of a single inverted hub.

To continue see next page

Tyre Couplings RINGFEDER® RLU

Explanations

T_{KN}	= Nom. Transmissible Torque	D₂	= Inner Sleeve Diameter	L	= Total Length
n_{max}	= Max. Rotational Speed	C₁	= Guided Length in Bore	L₁	= Total Length Single Inverted Hubs
Pilot Bore Size	= Required Size of the Pilot Bore	E	= Width of Gap Between Hubs	L₂	= Total Length Double Inverted Hubs
d₁/d₂	= Bore Diameter Hubs	E₁	= Width of Gap Between Single Inverted Hubs	Gw	= Approx. Weight
D₁	= Max. Outer Diameter	E₂	= Width of Gap Between Double Inverted Hubs		

Technical Information

- All dimensions are in inch, unless otherwise specified. Decimal points are used as decimal separators.
- All sizes of the type RLU BSB/RSR are equipped with high-speed rings as standard.
- The tyres consist of two halves connected by a metal bracket.
- The tyres are bolted radially to the hubs, which are mounted on axles.
- For other types of shaft-hub connections, please contact RINGFEDER POWER TRANSMISSION.
- For more detailed information on inverted hubs, torque transmission as well as hub and tyre materials, please contact RINGFEDER POWER TRANSMISSION.
- Tyre Couplings RLU are also available with single inverted hubs. Selection is made via the type in the order.
- Weight Gw is specified for maximum bore diameter.

Ordering example RLU without Spacer

Series	Type	Size	Bore Diameter d ₁	Bore Diameter d ₂
RLU	BWB	40M	2.625	3.25

Ordering example RLU with Spacer

Series	Type	Size	Bore Diameter d ₁	Bore Diameter d ₂
RLU	BSB	10M	1	2.1562

Ordering Information

- Definition of type: Left hub, spacer selection, right hub
- Definition of hubs: B = Standard Hub, R = Inverted Hub.
- Definition of Spacer: W = No Spacer, S = With Spacer.
- Without further specifications, we deliver as standard: Bore tolerance H7; Keyway acc. to DIN 6885-1; Keyway width tolerance JS9; Set screw per hub. For bores complying with AGMA or other specifications, please contact RINGFEDER POWER TRANSMISSION.

Disclaimer of liability

All technical details and notes are non-binding and cannot be used as a basis for legal claims. The user is obligated to determine whether the represented products meet his requirements. We reserve the right to carry out modifications at any time in the interests of technical progress.